

A NOTE ON THE IDENTITY OF *CIRRHOPETALUM ROSEOPUNCTATUM* (ORCHIDACEAE)

PAUL ORMEROD^{1,2} AND BA VUONG TRUONG³

Abstract. *Cirrhopetalum roseopunctatum* is illustrated from the type specimen. It is found to be conspecific with the later *Cirrhopetalum annamense*. In *Bulbophyllum* the combined entities must be known as *B. annamense* due to the earlier *B. roseopunctatum* Schltr.

Keywords: Bulbophyllum, Cirrhopetalum roseopunctatum, Orchidaceae

The genus *Bulbophyllum* Thouars (Orchidaceae) with over 2000 species is second only to *Epidendrum* L. in size. It is an aptly named genus because many of the species may be characterised by having a bulb and a leaf (though some are 2–3 leaved). For the most part the flowers have a hinged lip designed to tip the visiting insect against the column during the pollination process. The species discussed here belongs to section *Cirrhopetalum* (Lindl.) Rchb.f., currently a group of about nine species distributed from Africa to the Pacific (Vermeulen et al. 2015).

Bulbophyllum annamense (Garay) Sieder & Kiehn, CITES Orchid Checkl. 5: 406. 2009.

Basionym: *Cirrhopetalum annamense* Garay, Harvard Pap. Bot. 4, 1: 306. 1999.

TYPE: VIETNAM. Annam, Prenh [Prenh on sheet], 1000 m, 1954, *T. Sigaldi 144 (C.R.S.T. 151)* (Holotype: P 00362049 as *Cirrhopetalum roseopunctatum*, image seen). Fig. 1.

Heterotypic synonyms: *Bulbophyllum pulchrum* N.E. Br. var. *cliftonii* Gurney Fowler, Gard. Chron. s. 3: 136. 21 Aug. 1909 [Illustrated: Hort., Orch. Review 17: 328, b/w photo. Nov. 1909].

TYPE: WITHOUT ORIGIN. Exhibited R.H.S. London, 17 August 1909, *cult. Messrs. Charlesworth & Co. s.n.* (Holotype: lost).

Cirrhopetalum roseopunctatum Garay, Hamer & Siegerist, Lindleyana 10, 3: 179. 1995 *syn. nov.*

TYPE: VIETNAM. Langbian Plateau, fl. in cult. 1990, *L.V. Tempera s.n.* (Holotype: AMES, spirit).

Bulbophyllum schwarzii Sieder & Kiehn, Ann. Naturhist. Mus. Wien, B. 112: 316. 2011.

Usage synonyms: *Bulbophyllum picturatum auct. non* Lindl., Seidenf., Dan. Bot. Ark. 29, 1: 123, f. 62. 1974.

Bulbophyllum eberhardtii auct. non (Gagnep.) Seidenf., Seidenf., Opera Bot. 114: 285, f. 188. 1992.

Not *Bulbophyllum roseopunctatum* Schltr. 1913 (Papua New Guinea. Section *Polymeres*).

Distribution: Vietnam.

This beautiful species may be recognised by its umbels of pinkish-white flowers variously spotted and maculated throughout with darker pinkish-purple, relatively large flowers (lateral sepals 25–30 mm long), the broadly elliptic dorsal sepal adorned with an apical, clavate thread and two short side threads, the petals vary from cuneate to obliquely ovate, usually with some apical threads, but occasionally shorter hairs adorn the margins, the lip with raised basal lateral lobes, and the stout column with two ventral wings, whilst its brachia are variously bidentate apically.

Garay et al. (1995) described *Cirrhopetalum roseopunctatum* based on a Vietnamese plant cultivated by Lucien Tempera. However they illustrated the species with a sketch by Fritz Hamer based on an herbarium specimen in Paris (*T. Sigaldi 98 TS = 17/SM* [P 00362050, image seen]). In 1999 Garay reconsidered the identity of the specimen figured as *Cirrhopetalum roseopunctatum* and referred it to a new taxon *C. annamense*. Apparently, the latter differs in the color of the flowers, shape of the lateral sepals and shape of the lip. The only available image of the original *Cirrhopetalum roseopunctatum* is a photograph on the internet from the Garay archive that depicts the type plant in flower. From this we deduced that *C. roseopunctatum* was not that much different from *C. annamense*, however proof of their synonymy could not be determined until critical details were elicited from the spirit-preserved type of the former.

Bobbi Angell has been kind enough to delineate the type of *Cirrhopetalum roseopunctatum* (Fig. 1) and her drawing shows it to have all the critical characters of *Bulbophyllum annamense* listed above. We did not find any differences in flower color, lateral sepal shape, or lip shape that allow for the recognition of more than one species.

LITERATURE CITED

GARAY, L.A. 1999. Orchid species currently in cultivation. Harvard Pap. Bot. 4, 1: 301–319.

———. F. HAMER, E. S. SIEGERIST. 1995. *Inquilina Orchidaceae. Orchidaceae Plaerumque Levyanae*. Lindleyana 10, 3: 174–182.

VERMEULEN, J. J., P. O'BYRNE, AND A. LAMB. 2015. *Bulbophyllum* of Borneo. Natural History Publications (Borneo). Kota Kinabalu, Malaysia.

The first author wishes to thank staff of the Harvard University Herbaria and the Botany Libraries for their help and hospitality during his visits. We also wish to thank G. A. Romero-Gonzalez (Curator of the Oakes Ames Orchid Herbarium) and B. Angell for their generous assistance. Finally, we also wish to thank M. Pignal (P, Curator of Orchidaceae) for kindly recovering images of *Cirrhopetalum annamense*.

¹P.O. Box 8210, Cairns 4870, Queensland, Australia

²Corresponding author: wsandave1@bigpond.com

³Institute of Tropical Biology, Vietnam Academy of Science and Technology, Department of Biological Resources, 85 Tran Quoc St., Distr. 3, Ho Chi Minh City, Vietnam; bavuong2019@yahoo.com

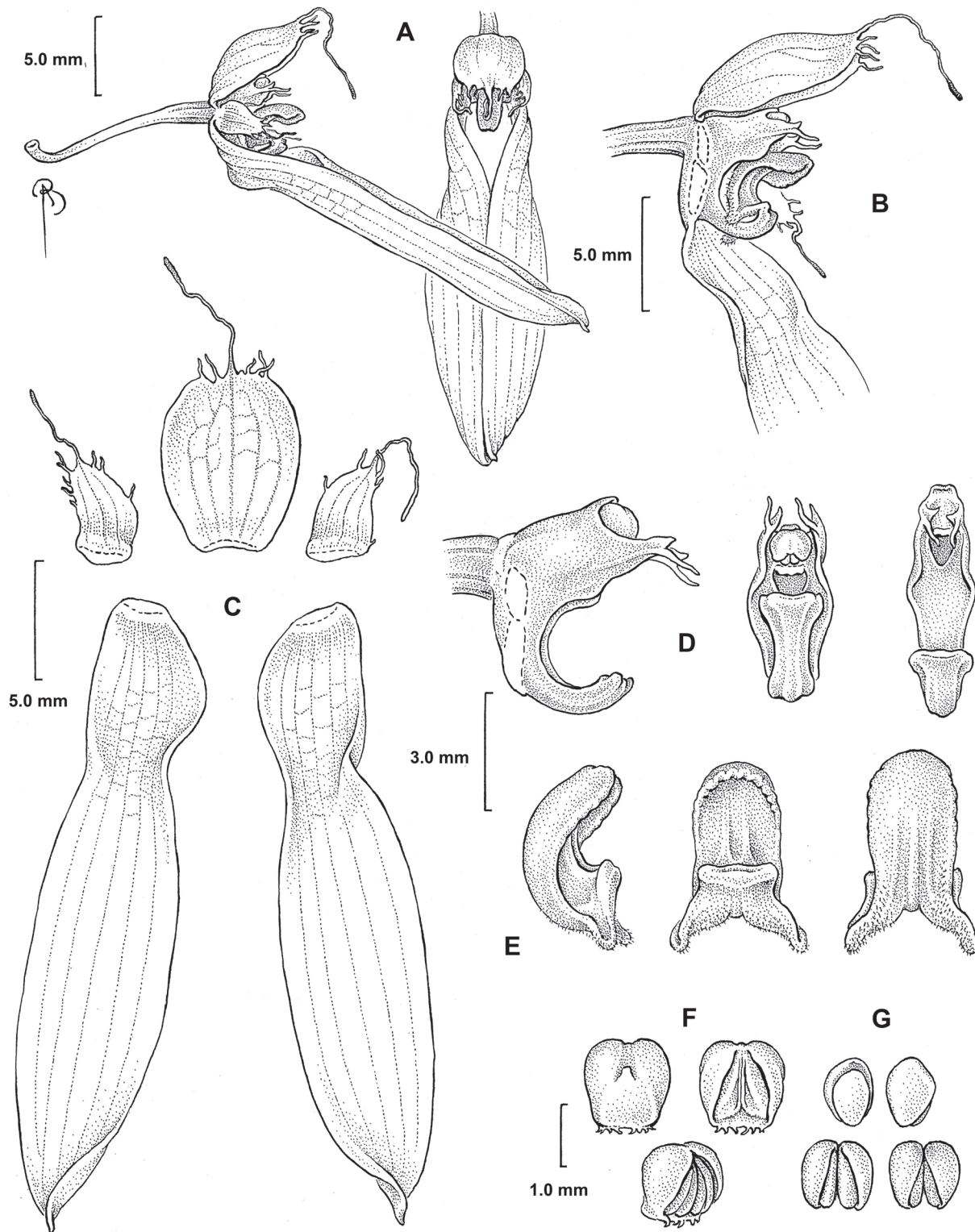


FIGURE 1. *Bulbophyllum annamense* (Garay) Sieder & Kiehn. **A**, View of the flower; **B**, side view of the flower after removal of a petal and a lateral sepal; **C**, sepals and petals; **D**, view of the column; **E**, views of the labellum; **F**, views of the anther; **G**, view of the pollinia. Drawing by B. Angell based on the holotype of *Cirrhopetalum roseopunctatum* Garay et al. (1995) at AMES, non *Bulbophyllum roseopunctatum* Schltr. (1913).